
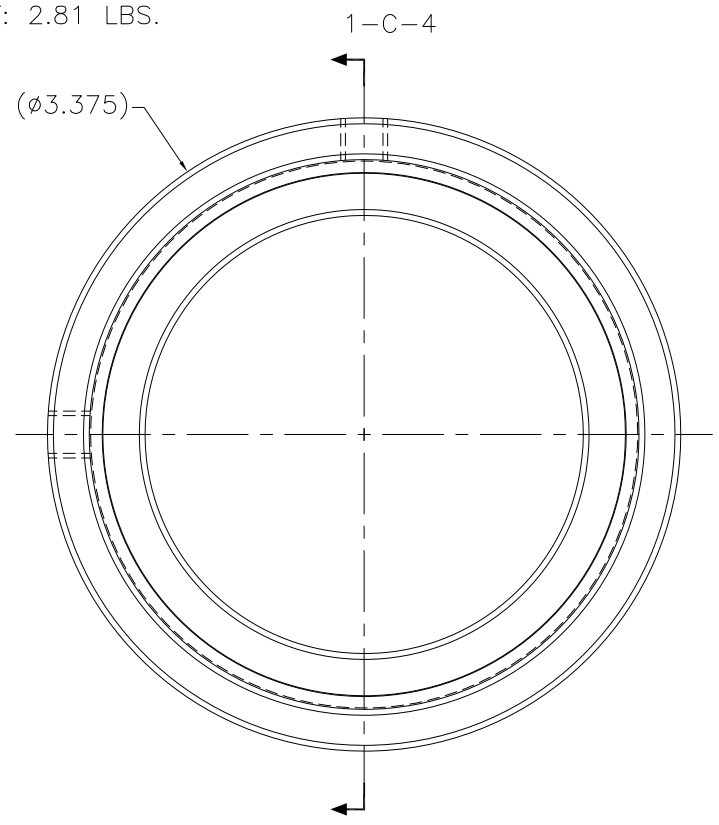


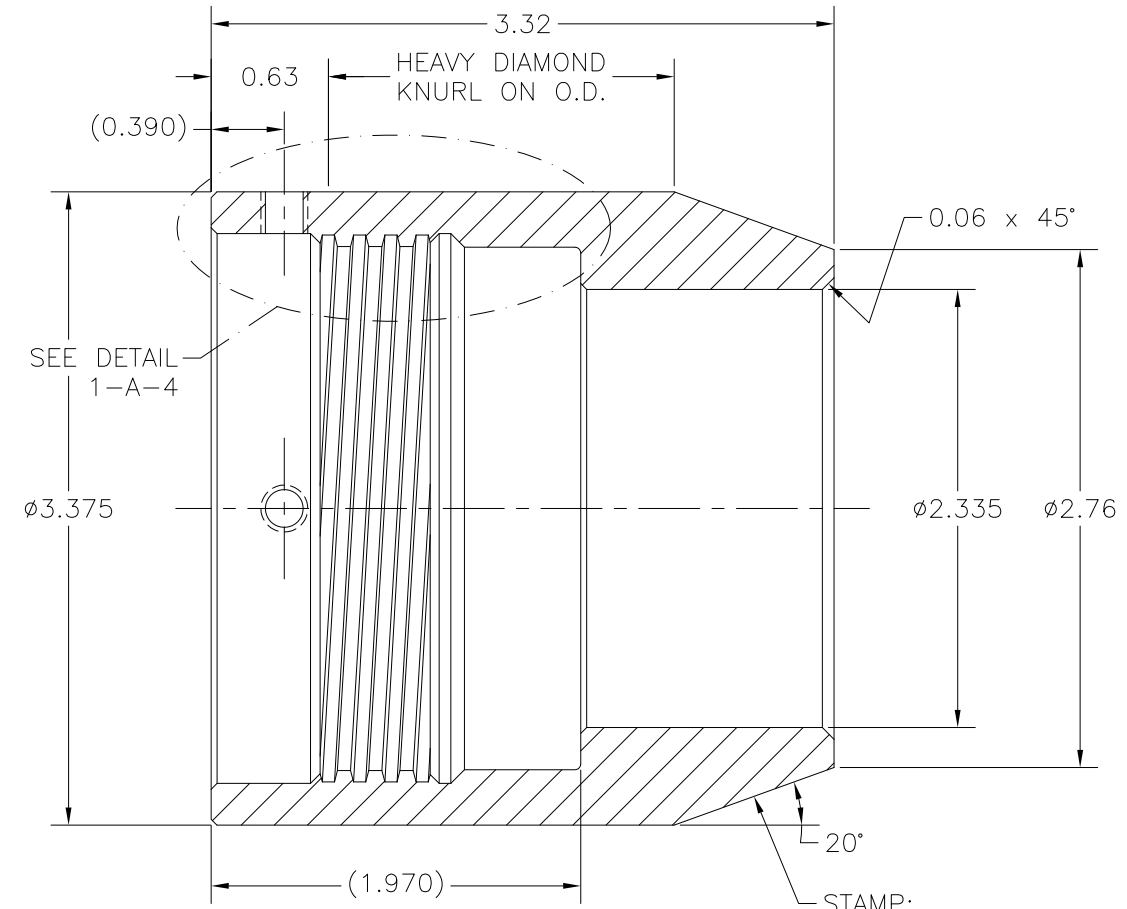
NOTES:

1. MATERIAL: BAR, 4130/4140/4142, $\phi 3.375 \times 3.32$ LG.
2. HEAT TREAT: COMMERCIAL HT. (RC 28-34)
3. SURFACE TREATMENT: AEROCOTE OR EQ.
4.  THREAD TRUNCATION TAPERED SMOOTHLY AT BOTH ENDS.
5. WEIGHT: 2.81 LBS.

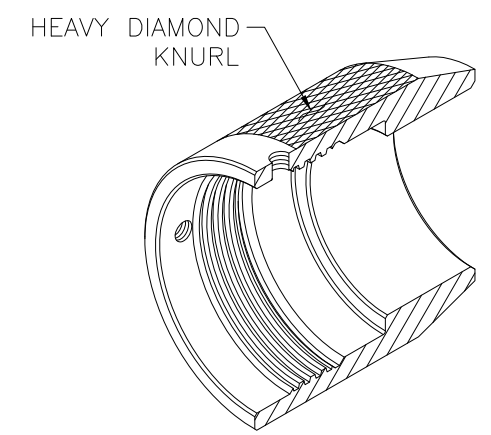
REVISIONS				
NO	DESCRIPTION	DATE	BY	APR/DATE
0	ISSUED FOR MANUFACTURE	05/12/10		



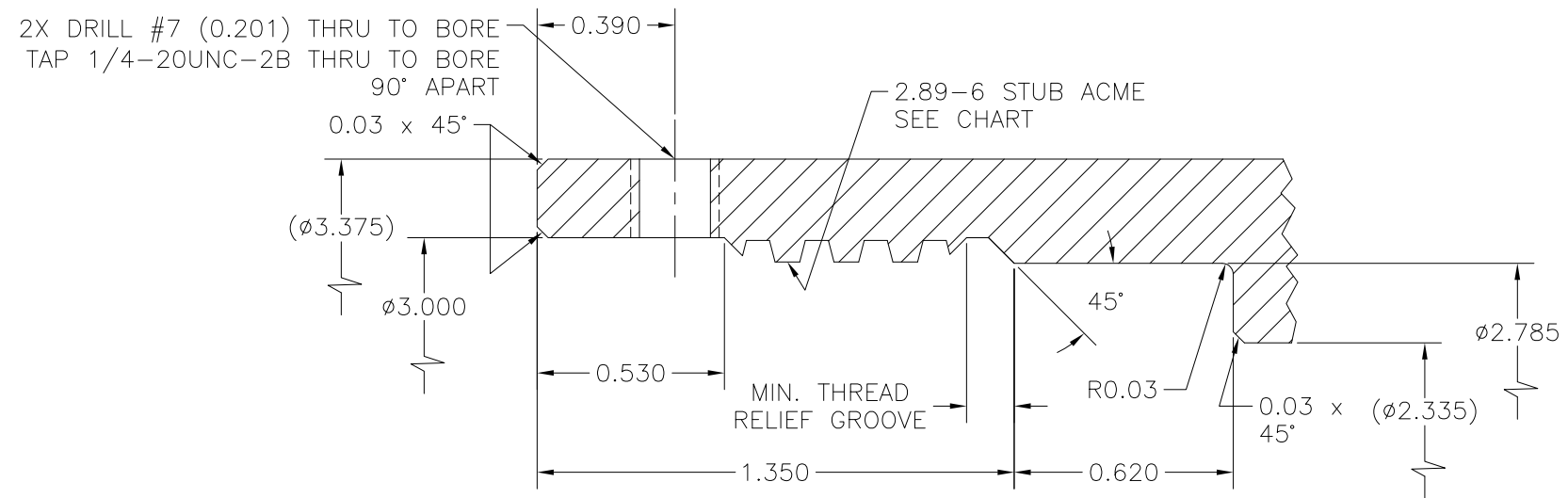
VIEW 1-C-7
UPPER SINKER BAR NUT



SECTION 1-C-4
REF. 1-D-7



PICTORIAL 1-C-2
UPPER SINKER BAR NUT
N.T.S.



DETAIL 1-A-4
REF. 1-C-5

2.89-6 STUB ACME THREAD INTERNAL	
MAJOR DIAMETER, MIN.	- 2.910
MAJOR DIAMETER, MAX.	- 2.920
PITCH DIAMETER, MIN.	- 2.840
PITCH DIAMETER, MAX.	- 2.850
MINOR DIAMETER, MIN.	- 2.790
MINOR DIAMETER, MAX.	- 2.798
BASIC THREAD HEIGHT	- 0.050
BASIC WIDTH OF CREST	- 0.070
THREAD PITCH	- 0.167

TOLERANCES: UNLESS OTHERWISE SPECIFIED 0.X ± 0.030 0.XX ± 0.010 0.XXX ± 0.005 ANGLES ± 1/2° BREAK EDGES 0.015 x 45° MIN. FINISH 125/ [Symbol] 0.010[A] ALL DIMS ARE IN INCHES, UNLESS NOTED OTHERWISE.		PROPRIETARY NOTICE THIS DRAWING AND THE INFORMATION IT CONTAINS ARE CONSIDERED CONFIDENTIAL, AND MAY NOT BE REPRODUCED, COPIED OR USED, IN PART OR IN WHOLE, WITHOUT PRIOR WRITTEN CONSENT.		Integrated Ocean Drilling Program TEXAS A&M UNIVERSITY 1000 DISCOVERY DRIVE COLLEGE STATION, TX 77845	
SHEET 1 OF 1 SCALE 1:2 BY KM DATE 03/30/10		TITLE UPPER SINKER BAR NUT SYSTEM ASSEMBLY 3° ERS CHECKED JCS APPROVED TP		SIZE D P/N ERS-001 REV. 0	